
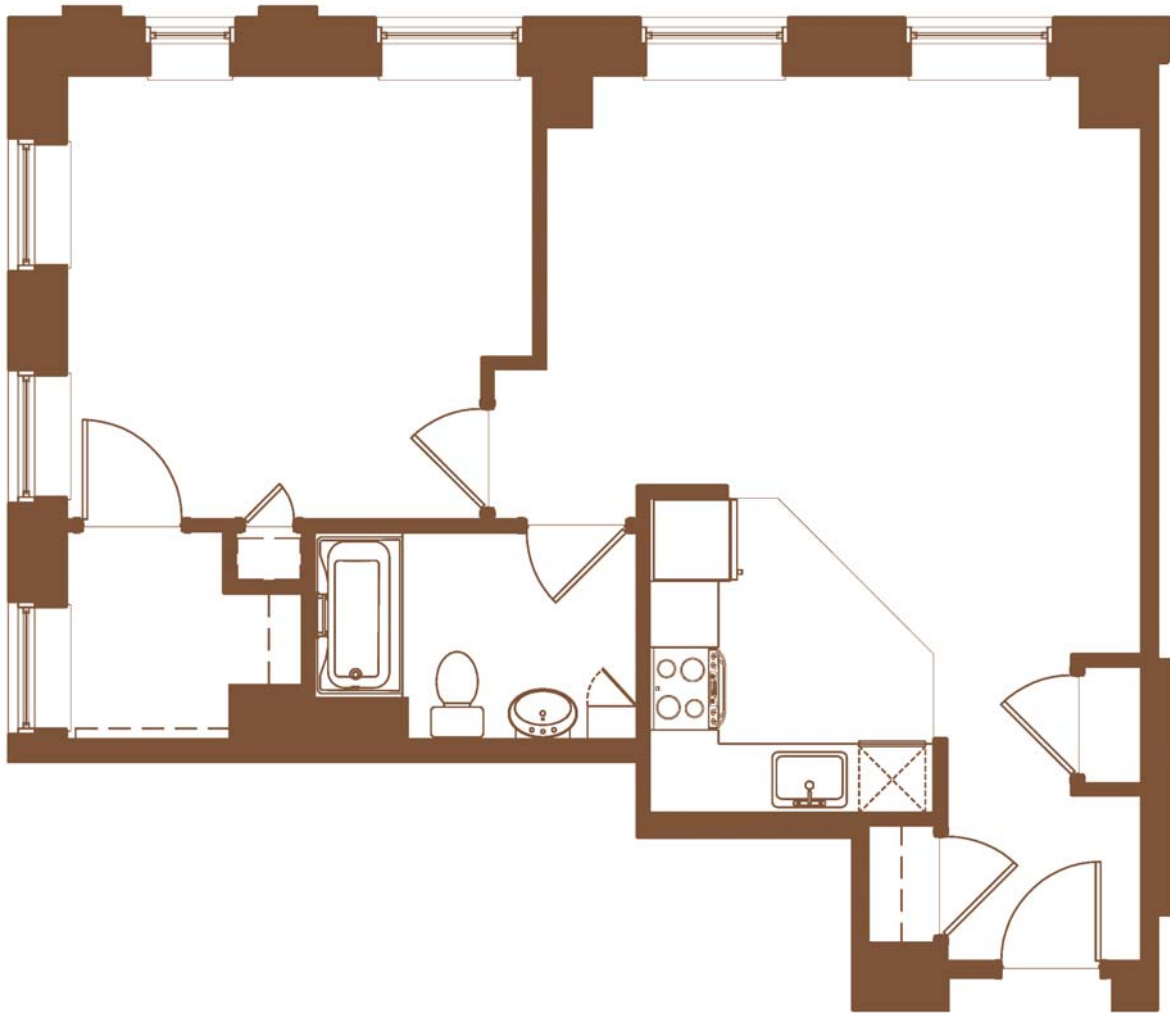


THE  HAYES
AT RAILROAD SQUARE

SAMPLE 1 BEDROOM - UNIT 503
888-744-2787 (APTS) • www.hayesapts.com


 Floor plans and square footages and other information are gross, estimated, and approximate for illustrative purposes only - configuration, dimensions, and other information are subject to change without notice due to existing field conditions, construction considerations, and other variations.



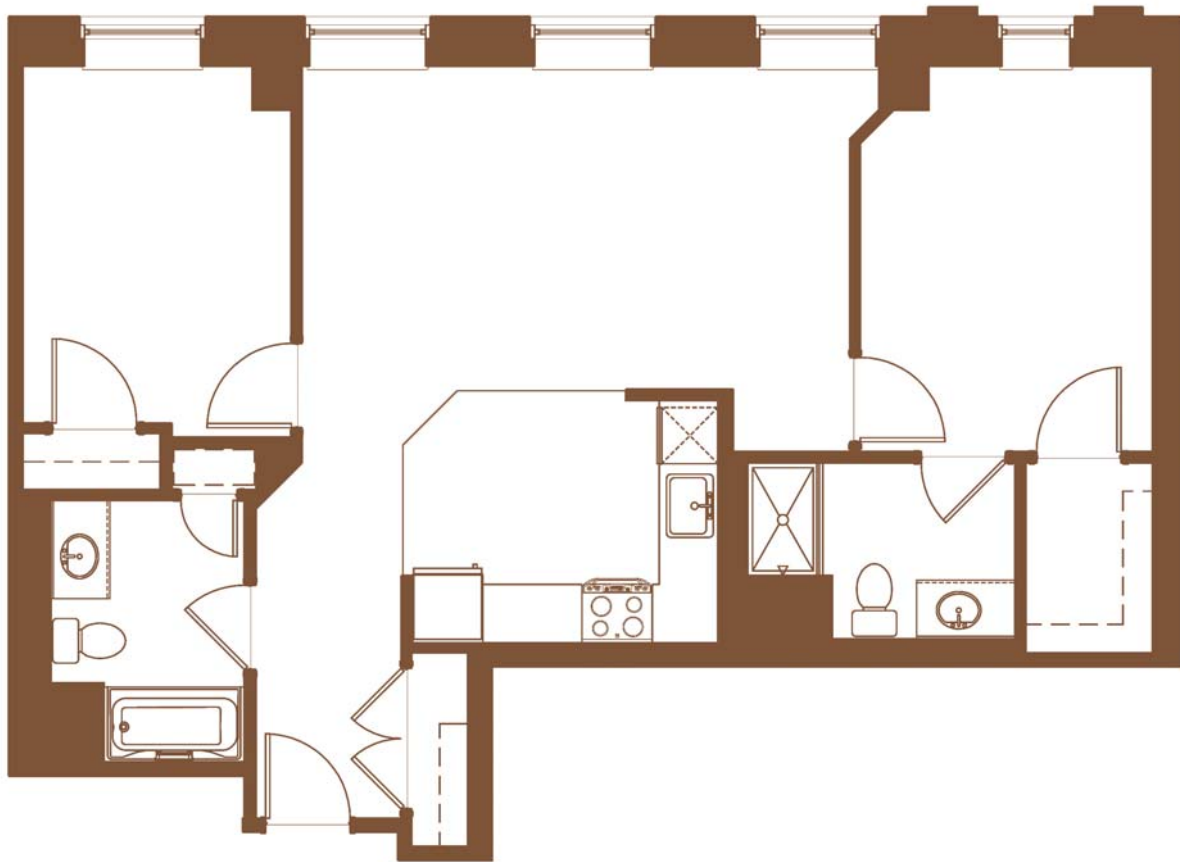


SAMPLE 1 BEDROOM - UNIT 506

888-744-2787 (APTS) • www.hayesapts.com


 Floor plans and square footages and other information are gross, estimated, and approximate for illustrative purposes only - configuration, dimensions, and other information are subject to change without notice due to existing field conditions, construction considerations, and other variations.



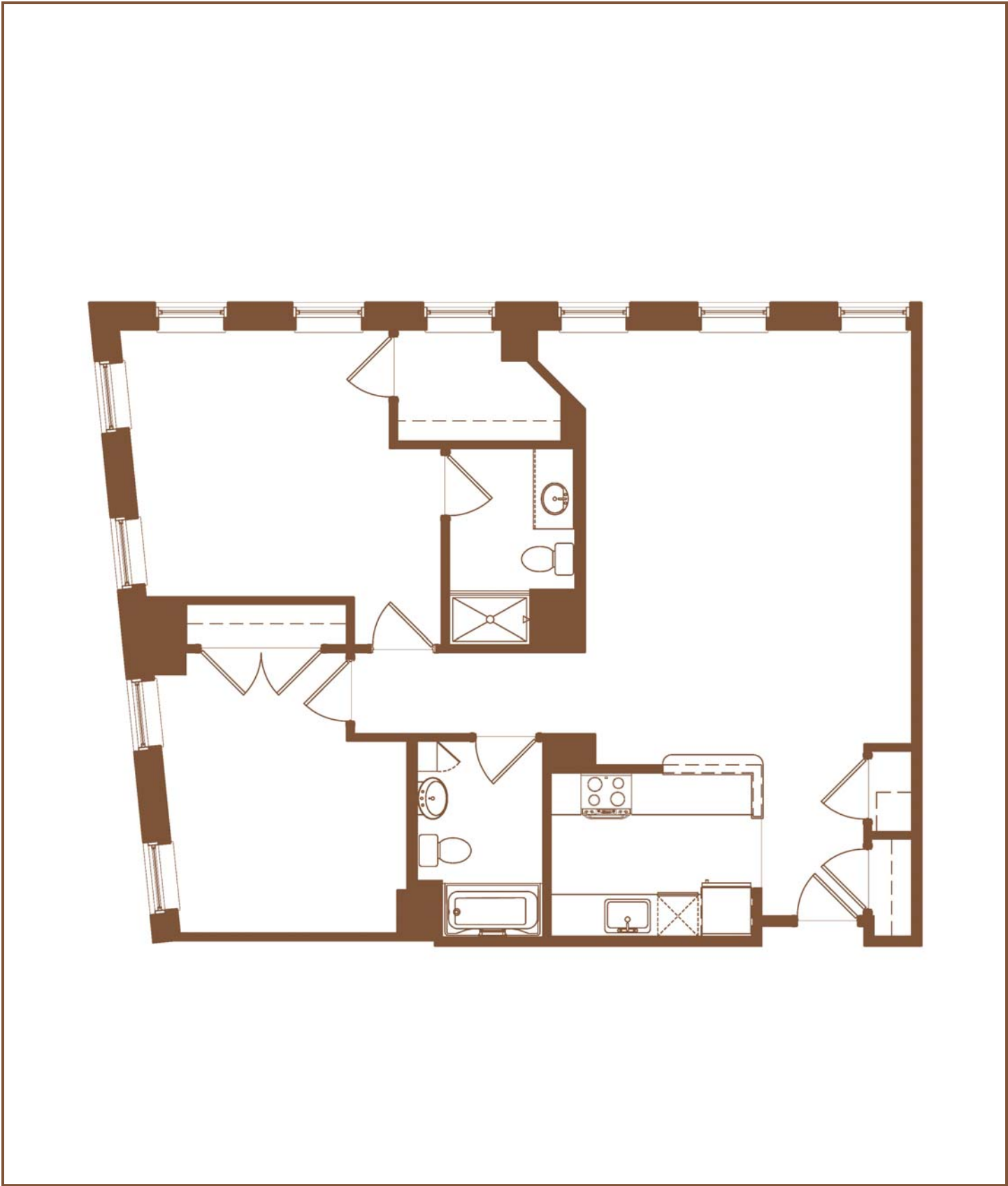


THE  HAYES
AT RAILROAD SQUARE

SAMPLE 2 BEDROOM - UNIT 502
888-744-2787 (APTS) • www.hayesapts.com


 Floor plans and square footages and other information are gross, estimated, and approximate for illustrative purposes only - configuration, dimensions, and other information are subject to change without notice due to existing field conditions, construction considerations, and other variations.





THE  HAYES
AT RAILROAD SQUARE

SAMPLE 2 BEDROOM - UNIT 509
888-744-2787 (APTS) • www.hayesapts.com

 Floor plans and square footages and other information are gross, estimated, and approximate for illustrative purposes only - configuration, dimensions, and other information are subject to change without notice due to existing field conditions, construction considerations, and other variations.





SAMPLE 2 BR DUPLEX- UNIT 509

888-744-2787 (APTS) • www.hayesapts.com

Floor plans and square footages and other information are gross, estimated, and approximate for illustrative purposes only - configuration, dimensions, and other information are subject to change without notice due to existing field conditions, construction considerations, and other variations.

